



NPTC

NATIONAL PSYCHOLOGY TRAINING CONSORTIUM
Training Tomorrow's Psychologists

Central Region Internship Brochure

Revised August 2020

**APA ACCREDITED
APPIC MEMBER**

2885 W. Battlefield St.
Springfield, MO 65807
www.psychologyinterns.org

Table of Contents

Table of Contents	2
Organizational Overview	3
Introduction	3
Mission Statement	3
Long-Term Diversity Plan	?
Non-Discrimination Policy.....	?
Disabilities Support Services Policy.....	?
Doctoral Internship Program Overview	?
Overview of Training Program	?
Philosophy of Training Program.....	?
Graduation Requirements	?
Internship Program Learning Activities	?
Intervention	?
Supervision.....	?
Assessment	?
Didactic Training	?
Clinical Supervision Exercise	?
Intern Critical Analysis	?
Journal Review	?
NPTC-Central Settings and Application	?
Site Membership and Descriptions.....	?
Psychology Intern Schedule and Time Allocation.....	?
Benefits	?
Eligibility, Application, and Selection Procedures	?
APPIC Match Information	?
Internship Admissions, Support, and Initial Placement Data	?
References.....	?
Appendix A: APA Accreditation	?
Appendix B: Organizational Information	?
Appendix C: Research Reviews	?



Organizational Overview

Introduction

The National Psychology Training Consortium (NPTC, previously Heart of America Psychology Training Consortium) is an APA-accredited not-for-profit entity that partners with various organizations including academic programs, community agencies, private hospitals, and independent practitioners to provide a sequential, cumulative, and graded training environment. The objective of the internship is to prepare prospective psychologists to function effectively in a variety of mental health settings and to provide services to a variety of populations in rural health care.

NPTC was founded in 2003 through a collaboration of The School of Professional Psychology at Forest Institute and Royal Oaks Hospital to create new internship positions in underserved areas (under the name Heart of America Psychology Training Consortium). As of October 2013, NPTC received seven years accreditation by the Commission on Accreditation of the American Psychological Association (see Appendix A for more information about NPTC's accreditation status). NPTC has also been an APPIC member since fall of 2004. The executive training staff of NPTC include the President/CEO, Adam Andreassen, Psy.D.; Regional Training Director, Dustin Brown, Psy.D.; Director of Special Projects, Angela King, Psy.D.; Director of Diversity Enhancement, Karen Shipley, Psy.D.; Director of Operations, Katherine Dixon, M.A.; Operations Coordinator, Toni Ripper; Operations Assistant, Audrey DeMate; and Communications Coordinator, Lane Pybas. The Central Region of NPTC is comprised of sites located in Missouri and Arkansas. The Executive Training Office for NPTC is located in Springfield, Missouri.

Mission Statement

Training Tomorrow's Psychologist in the Discipline and Practice of Psychology with Rural and Underserved Patients

The mission of NPTC closely aligns with the vision and mission of the American Psychological Association's Committee on Rural Health (CRH). The mission of NPTC emulates that of the CRH in the following ways: 1) ensuring availability of behavioral and physical health services; 2) improving the availability and retention of psychologists; 3) increasing psychological services; and 4) encouraging integrative care to reduce behavioral health care stigmas.

Long-Term Diversity Plan

NPTC is committed to promoting and infusing diversity into every facet of the training experience. NPTC adheres to the definition of diversity provided in the Commission on Accreditation-Guidelines and Principles (2012), Domain A, Section 5, as “personal and demographic characteristics. These include, but are not limited to, age, disability, ethnicity, gender, gender identity, language, national origin, race, religion, culture, sexual orientation, and social economic status.” NPTC is dedicated to providing psychology interns with opportunities to work with populations in a variety of settings that promote and provide necessary exposure to diverse populations and issues. In addition, NPTC recognizes the importance of multicultural awareness and competence in the provision of professional service and strives to prepare prospective psychologists to meet the needs of a progressively global and dynamic society.

With this in mind, NPTC has devised a long-term diversity plan to not only provide diversity training and experiences to its interns, but to also provide a safe, trusting, accepting atmosphere at its sites. In order to accomplish these goals, NPTC has outlined three main areas of program diversity:

1. Diversity Education

- a. NPTC’s mission statement is to train psychologists in the discipline and practice of psychology with rural and underserved patients. All training sites provide treatment to patients who represent various aspects of diversity, including age, religion, disability, and lower socioeconomic status. Supervisors provide interns with opportunities to work with diverse patients as cases become available.
- b. NPTC has made diversity and diversity training a core component of its program goals and objectives in order to provide the appropriate emphasis on diversity to interns and ensure they graduate with an appropriate respect for diversity in all its forms.
- c. NPTC values and emphasizes the importance of training in diversity and is committed to dedicating a two and a half hour seminar to diversity issues each month, as well as speakers from various areas of diversity when available.
- d. All interns are evaluated quarterly on their ability to work with patients from diverse backgrounds.
- e. As part of their core training expectations, Interns spend two hours each week in self-directed journal review, at least 10% of which must include diversity-related topics. Fulfillment of this guideline is monitored and verified monthly by the Site Training Director.

- f. NPTC's *Director of Diversity Enhancement* initiates and monitors the Long-Term Diversity Education Plan. This individual also presents diversity trainings, promotes diversity enhancement, consults with interns on diversity issues, and, if necessary, provides interns with referrals to other diversity experts.
 - g. NPTC's Board of Directors has a Diversity Committee chaired by one of the agency's Directors of Diversity Enhancement. This committee reviews research pertaining to both training and education of diversity topics as well as best practices for employment and retention of diverse staff. This committee reports to the Board during each Board meeting and disseminates their recommendations agency-wide for reference and application as appropriate.
 - h. Four of NPTC's Central Region member sites provide regular diversity training for their employees. The remaining NPTC sites conduct informal discussions relating to diversity in their regular staff meetings and in supervisory or training activities. Information has been provided to these sites on various online trainings that are available to them to use.
2. Psychology Intern Diversity Recruitment and Retention
- a. NPTC highlights the opportunities for diversity training through the training sites on its webpage and in the APPIC directory.
 - b. To encourage applicants interested in working in rural, need-based areas, NPTC highlights sites which are members of the National Health Service Corps loan repayment program. This increases the potential of attracting diverse applicants interested in longer-term placements in high-need diverse areas.
 - c. NPTC advertises available internship positions in the APA Division 38, APA Division 44, and APA Division 45 newsletters, and contacts individuals participating in the APA Minority Fellowship program in order to encourage a more diverse applicant pool.
 - d. NPTC advertises its program and available positions by sending its brochure to doctoral programs which have degree concentrations in Rural Psychology and/or Integrative Primary Care, for instance, Marshall University, University of North Dakota, East Tennessee State University, Ohio State University, East Carolina University, and University of Alaska.
 - e. While it is likely that psychology interns will have a range of pre-existing attitudes and values related to diversity issues, acceptance to the training program is seen as a commitment to:
 - i. The social value of respect for diversity;
 - ii. Willingness to engage in self-disclosure, self-reflection and introspection;
 - iii. Readiness to resolve or eliminate attitudes, beliefs, and behaviors that could have a negative impact on their ability to perform the functions of

a mental health professional in accordance with the highest standards and principles of professional practice and ethics.

3. Staff/Supervisor Diversity Recruitment and Retention

- a. All NPTC member sites are encouraged to consider the following strategies when choosing staff and supervisors for their sites:
 - i. Advertise staff openings in venues targeting diverse applicants.
 - ii. Incorporate an inclusive diversity statement in all staff job advertisements.
 - iii. Request referrals and nominations of candidates from underrepresented groups completing doctoral programs.
 - iv. Allow/encourage support staff, supervisors and interns to attend diversity-oriented training and conferences.
- b. All NPTC member sites have non-discrimination policies in place within their organizations.
- c. NPTC expects that all members of the consortium will promote a safe, trusting, and accepting environment and strive to learn from each other in an atmosphere of mutual respect.
- d. It is also expected that all members of the consortium be supportive and respectful of all individuals, including, but not limited to, patients, staff, peers, administrators, and supervisors who are different from them in age, gender, gender identity, body size, race, ethnicity, culture, national origin, religion, spirituality, sexual orientation, disability, language, or socioeconomic status.

Non-Discrimination Policy

NPTC and member sites are Equal Opportunity/Affirmative Action employers and do not discriminate on the basis of race, color, religion, ethnic or national origin, creed, ancestry, gender, disability or age, sexual orientation, or veteran status in employment or in any of its programs and activities. For questions, concerns, or more information, contact Katherine Dixon at kdixon@psychologyinterns.org.

Disabilities Support Services Policy

Within the guidelines set forth in this policy, NPTC and member sites are committed to providing an accessible and supportive environment for individuals with disabilities. NPTC and member sites do not discriminate on the basis of disability against otherwise-qualified individuals in any program, service, or activity offered by the consortium. NPTC is committed to ensuring that no otherwise-qualified individual with a disability is excluded, denied services, segregated, or otherwise treated differently than other individuals because of the absence of

auxiliary aids or other appropriate services. Such accommodations, however, cannot result in an undue burden to NPTC or member sites or fundamentally alter the requirements essential to a psychology training program. NPTC reserves the right to determine whether a psychology intern or resident is capable of performing the duties required by the program.

Notification to the Consortium of any and all types of personal needs involving physical, emotional, and learning difficulties and/or needs related to the Americans with Disabilities Act is the sole responsibility of the psychology intern. The individual should notify the Support Coordinator for Persons with Disabilities as soon as the need for accommodations becomes evident. In order to receive accommodations, the individual must provide the Support Coordinator for Persons with Disabilities with appropriate documentation of the disability. Only persons interested in receiving disability-related accommodations need to provide disability documentation. If eligibility for accommodations is established and the request for accommodations approved, the Support Coordinator for Persons with Disabilities will coordinate a meeting between psychology intern and the necessary Training Directors and/or supervisors to review the approved accommodations. While all reasonable efforts will be made to accommodate individual needs, it is conceivable that some conditions and circumstances may exist which cannot be reasonably accommodated. To initiate an inquiry or request for accommodations, the individual must contact Katherine Dixon at kdixon@psychologyinterns.org.



Doctoral Internship Program Overview

Overview of Training Program

NPTC believes that the competent practice of psychology requires an integration of scientific and professional knowledge, skills, and attitudes. Thus, NPTC's internship training incorporates diverse psychological theories, approaches, and perspectives that are designed to prepare psychology interns for a broad range of professional roles and activities. The training program is also attuned to the continually expanding scope and evolving nature of the field and the likelihood that clinical psychologists will engage in multiple roles over the course of their professional careers.

NPTC is committed to providing a clinical training experience that is sequential, cumulative, and graded in complexity. The training is conducted in a facilitative and supportive manner that provides each psychology intern with the opportunities to experience the practice of psychology with rural and underserved patients and as members of multidisciplinary integrative primary care teams. Psychology interns are respected trainees who make valuable contributions that enhance the learning environment of the organization as a whole. Psychology interns are provided the opportunity to expand their understanding of theoretical principles and translate that knowledge into practice.

The goal of the supervisory relationship is to maximize the opportunity for the psychology interns to develop a constructive, collaborative working alliance that supports growth, learning, and quality care provision. Through collaborative modeling with supervisors, psychology interns are socialized into the profession and develop an appreciation for continuing professional development and lifelong learning.

Philosophy of Training Program

The National Psychology Training Consortium seeks to train prospective psychologists to the discipline and practice of clinical psychology by employing an empirically-informed competency-based practitioner-scholar model. The three program aims include the following:

- **Aim 1:** To provide broad and general training in psychology with emphasis on applied empirical knowledge.
- **Aim 2:** To prepare psychology interns to competently address the needs of diverse populations, with emphasis on underserved.
- **Aim 3:** To socialize psychology interns to utilize critical thinking, problem solving, and meaningful self-reflection to facilitate life-long professional development.

The program utilizes these aims to provide experiences in clinical learning environments that are responsive to the changing needs of diverse communities.

As psychological practice is inarguably based on science, the program firmly believes the competent, evidence-based practice of psychology requires an integration of both scientific and professional knowledge, skills and attitudes. Our training model not only emphasizes the importance of broad and general training in clinical psychology but also prioritizes the integration of science and practice via implementation of the practitioner-scholar as a “local clinical scientist.” As described by Trierweiler and Stricker (1992), this perspective emphasizes:

- being a generalist of knowledge and method;
- focusing on local realities in which data are gathered as they apply to a particular case but may be limited in the extent to which they generalize to other cases; and
- developing an active inquiring mind as opposed to concentrating on technical expertise with scientific methods (p. 104).

Internship training is guided by consortium values that include:

- Broad and general practice with the opportunities to move into new, emerging areas;
- Multiples ways of knowing, sources of knowledge, and values;
- Commitment to life-long learning;
- Valuing of human diversity;
- Self-awareness, open-mindedness, flexibility, personal integrity, and honesty;
- Guidance by professional ethics and standards of conduct.

These values serve to compliment the profession-wide competencies of the Internship Program.

Profession-Wide Competencies	
I. Research	
Behavioral Objectives	Evaluation Methods
1. Demonstrates the substantially independent ability to critically evaluate and disseminate research or other scholarly activities (e.g., case conference, presentation, publications) at the local (including the host institution), regional, or national level.	Psychology Intern Quarterly Evaluation (Research Questions 1-3) Critical Analysis
II. Ethical and Legal Standards	
Behavioral Objectives	Evaluation Methods
1. Be knowledgeable of and act in accordance with each of the following: <ul style="list-style-type: none"> a. the current version of the APA Ethical Principles of Psychologists and Code of Conduct; 	Psychology Intern Quarterly Evaluation (Ethical and Legal Standards questions 1-4)

<ul style="list-style-type: none"> b. relevant laws, regulations, rules, and policies governing health service psychology at the organizational, local, state, regional, and federal levels; and c. relevant professional standards and guidelines. <ol style="list-style-type: none"> 2. Recognize ethical dilemmas as they arise, and apply ethical decision-making processes in order to resolve the dilemmas. 3. Conduct self in an ethical manner in all professional activities. 	
--	--

III. Individual and Cultural Diversity

Behavioral Objectives	Evaluation Methods
<ol style="list-style-type: none"> 1. Demonstrate an understanding of how their own personal/cultural history, attitudes, and biases may affect how they understand and interact with people different from themselves; 2. Demonstrate knowledge of the current theoretical and empirical knowledge base as it relates to addressing diversity in all professional activities including research, training, supervision/consultation, and service; 3. Demonstrate the ability to integrate awareness and knowledge of individual and cultural differences in the conduct of professional roles (e.g., research, services, and other professional activities). This includes the ability apply a framework for working effectively with areas of individual and cultural diversity not previously encountered over the course of their careers. Also included is the ability to work effectively with individuals whose group membership, demographic characteristics, or worldviews create conflict with their own. 4. Demonstrate the ability to independently apply their knowledge and approach in working effectively with the range of diverse individuals and groups encountered during internship. 	<p>Psychology Intern Quarterly Evaluation</p> <p>(Individual and Cultural Diversity questions 1-4)</p>

IV. Professional Values and Attitudes

Behavioral Objectives	Evaluation Methods
<ol style="list-style-type: none"> 1. Behave in ways that reflect the values and attitudes of psychology, including integrity, deportment, professional identity, accountability, lifelong learning, and concern for the welfare of others. 2. Engage in self-reflection regarding one’s personal and professional functioning; engage in activities to maintain and improve performance, well-being, and professional effectiveness. 3. Actively seek and demonstrate openness and responsiveness to feedback and supervision. 4. Respond professionally in increasingly complex situations with a greater degree of independence as they progress across levels of training. 	<p>Psychology Intern Quarterly Evaluation</p> <p>(Professional Values and Attitudes questions 1-4)</p> <p>Quarterly Professionalism Review</p>

V. Communication and Interpersonal Skills	
Behavioral Objectives	Evaluation Methods
<ol style="list-style-type: none"> 1. Develop and maintain effective relationships with a wide range of individuals, including colleagues, communities, organizations, supervisors, supervisees, and those receiving professional services. 2. Produce and comprehend oral, nonverbal, and written communications that are informative and well-integrated; demonstrate a thorough grasp of professional language and concepts. 3. Demonstrate effective interpersonal skills and the ability to manage difficult communication well. 	<p>Psychology Intern Quarterly Evaluation</p> <p>(Communication and Interpersonal Skills questions 1-3)</p>
VI. Assessment	
Behavioral Objectives	Evaluation Methods
<ol style="list-style-type: none"> 1. Demonstrate current knowledge of diagnostic systems, functional and dysfunctional behaviors, including consideration of client strengths and psychopathology. 2. Demonstrate understanding of human behavior within its context (e.g., family, social, societal, and cultural). 3. Demonstrate the ability to apply the knowledge of functional and dysfunctional behaviors including context to the assessment and/or diagnostic process. 4. Select and apply assessment methods that draw from the best available empirical literature and that reflect the science of measurement and psychometrics; collect relevant data using multiple sources and methods appropriate to the identified goals and questions of the assessment as well as relevant diversity characteristics of the service recipient. 5. Interpret assessment results, following current research and professional standards and guidelines, to inform case conceptualization, classification, and recommendations, while guarding against decision-making biases, distinguishing the aspects of assessment that are subjective from those that are objective. 6. Communicate orally and in written documents the findings and implications of the assessment in an accurate and effective manner sensitive to a range of audiences. 	<p>Psychology Intern Quarterly Evaluation</p> <p>(Evidence Based Practice in Assessment questions 1-4)</p>
VII. Intervention	
Behavioral Objectives	Evaluation Methods
<ol style="list-style-type: none"> 1. Establish and maintain effective relationships with the recipients of psychological services. 2. Develop evidence-based intervention plans specific to the service delivery goals. 3. Implement interventions informed by the current scientific literature, assessment findings, diversity characteristics, and contextual variables. 	<p>Psychology Intern Quarterly Evaluation</p> <p>(Evidence Based Practice in Intervention questions 1-6)</p>

4. Demonstrate the ability to apply the relevant research literature to clinical decision making.	
5. Modify and adapt evidence-based approaches effectively when a clear evidence-base is lacking,	
6. Evaluate intervention effectiveness, and adapt intervention goals and methods consistent with ongoing evaluation.	
VIII. Supervision	
Behavioral Objectives	Evaluation Methods
1. Apply knowledge of supervision models and practices in direct or simulated practice with psychology trainees, or other health professionals.	Psychology Intern Quarterly Evaluation (Evidence Based Practice in Supervision questions 1-3) Clinical Supervision Exercise
IX. Consultation and Interprofessional/Interdisciplinary Skills	
Behavioral Objectives	Evaluation Methods
1. Demonstrate knowledge and respect for the roles and perspectives of other professions.	Psychology Intern Quarterly Evaluation (Consultation and Interprofessional/ Interdisciplinary Skills questions 1-2)
2. Apply this knowledge in direct or simulated consultation with individuals and their families, other health care professionals, interprofessional groups, or systems related to health and behavior.	

Graduation Requirements

The following is the list of program requirements psychology interns are expected to achieve in order to graduate from the internship program:

- Complete 2,000 total internship hours.
- Maintain a minimum caseload of 10 face-to-face patient contact hours per week, resulting in at least 25% patient contact or 500 hours over the course of the year.
- Complete at least 200 hours of supervision over the course of the year, at least 100 of which needs to be individual supervision with a licensed psychologist.
- Complete a minimum of 10 assessment reports appropriate to the training site.
- Attend all scheduled didactic training activities as specified in the Didactic Training section of the manual and complete the Satisfaction Surveys following each training.
- Participate in the *Clinical Supervision Exercise* at least twice as a supervisor and twice as a supervisee.
- Complete a *Critical Analysis* with a score of 2 or above in each category.
- Complete time tracking using the NPTC Payroll Manager website. Time tracking must be submitted every two weeks.
- Average score of 2.5 in each competency on the *Psychology Intern Quarterly Evaluation* in the second quarter (with no ratings of 1), average score of 3 (Satisfactory Strength) in the third quarter (with no ratings of 1 or 2), and receives scores of at least 4

(Competent) in the fourth quarter with no items rated 1 (Unfamiliar), 2 (Aware/Developing), or 3 (Satisfactory Strength) to demonstrate they have achieved the objectives and competencies set by the Consortium.

- Maintain a score of 3 (Satisfactory) or higher on each area of the *Quarterly Professionalism Review*.
- Complete any additional tasks as requested by the Executive Training Office throughout the year.

Internship Program Learning Activities

A unique focus of the program is the intersection between psychology and integrated primary care in rural and underserved areas. NPTC-Central provides various activities designed to establish the psychology intern's competence in engaging in evidence-based practice, serving diverse populations and demonstrating professionalism and ethical decision making. Some of the assignments immerse the intern in direct service delivery (e.g., outpatient intervention), while other experiences provide training and support (e.g., individual supervision or didactics). These training activities are structured in terms of sequence, intensity, duration and frequency, allowing the intern to develop mastery at each step before progressing to the next. Interns are provided with a combination of required and elective activities during the internship to prepare them to deliver a variety of psychological services. Interns actively participate in the selection of learning activities with respect to the number and intensity of activities completed.

Performance in program assignments is monitored and supported through the individual supervision process. At the beginning of the training year, the Site Supervisor/Site Training Director will meet with the intern to generate a learning plan, specifically the Individual Learning and Training Plan (ILTP), which designates the assignments necessary to complete the internship. The ILTP reflects both required and elective activities for the specific internship site.

Intervention

Intervention is considered foundational to the training experience. It is a core experience including an ongoing caseload of adult, adolescent, or child patients. The psychology intern is expected to obtain a minimum of 10 face-to-face patient contact hours (25% of time) per week for a total of no fewer than 500 hours over the course of the year. Patient contact hours for this component accumulate through a variety of treatment modalities, depending on site placement. Potential modalities include: inpatient or outpatient, individual, group, couples and family intervention, and assessment administration. The intern's performance is assessed at the outset of the internship and patients are assigned consistent with the intern's developmental readiness. As proficiency increases, interns are assigned more complex and challenging cases. Interns conduct co-intervention and participate in direct observation or other training opportunities with their primary and/or secondary supervisors when possible.

Note: The following table represents supervised experiences with emphases of 31% or greater in at least one of the sites. The percentage may be lower at the other sites. See the website for more detailed information about all of the supervised experiences at each site.

TABLE 1: Examples of Training Modalities

	Burrell	Clark Center	Compass Health	Family Psych. Center	Royal Oaks Hospital	Truman Medical Centers
Assessment	X	X	X	X	X	X
Individual Intervention	X	X	X	X	X	X
Family Intervention	X	X	X	X	X	
Group Intervention	X	X	X	X	X	X
Consultation/Liaison	X	X	X	X	X	X
Couples Intervention	X		X	X	X	X
Crisis Intervention	X	X	X	X	X	X
Brief Intervention	X	X	X	X	X	X
Long-Term Intervention	X	X	X	X		
Evidence Based Practice	X	X	X	X	X	X

Supervision

Interns are assigned two primary supervisors and primary supervision is solely done by licensed psychologists on staff. The training director and primary supervisors are responsible for intern training. Two hours of individual face-to-face intensive supervision are provided each week (one hour from each primary supervisor). Supervision focuses on assessment, relationship building, clinical interview and intervention skills, application of theory to practice, and integration of the aforementioned functions with the intern's developing professional style. Intern supervision includes in-vivo supervision, video- or audiotaped supervision, process notes, and case discussion. The form of supervision chosen by the supervisor depends on the particular intern's supervision needs. While supervision remains intense throughout the internship year, interns are afforded more autonomy as their skills progress. The following are examples of topics addressed throughout the intern's individual supervision:

- Application of theory to practice
- Assessment
- Clinical interview skills
- Topics of diversity (personal or client-related)
- Supervision theories and style (supervisor's style and intern's style)
- Integration of therapeutic modalities with the developing personal and professional style of the psychology intern
- ILTP discussion and review
- Case conceptualizations
- Hours reports and time tracking
- Personal and professional development of the intern (post-doc and dissertations)
- Progression with respect to the psychology intern's use of self within sessions
- Development of consultation skills
- Integration of research data into practice

Note: The following table represents supervised experiences with emphases of 31% or greater in at least one of the sites (and with representation in at least three sites). The percentage may be lower at the other sites. See the website for more detailed information about all of the supervised experiences at each site.

TABLE 2: Examples of Supervised Experiences

	Burrell	Clark Center	Compass Health	Family Psych. Center	Royal Oaks Hospital	Truman Medical Centers
Health Psychology	X		X	X	X	X
Women's Health	X		X	X	X	X
Learning Disabilities	X		X	X	X	X
Developmental Disabilities	X		X	X	X	X
Assessment	X	X	X	X	X	X
Neuropsychology – Adult	X	X		X	X	X
Serious Mental Illness	X	X	X	X	X	X
Anxiety Disorders	X	X	X	X	X	X
Trauma / PTSD	X	X	X	X	X	X
Sexual Abuse	X	X	X	X	X	X
Substance Use Disorders	X	X	X	X	X	X
Pediatrics	X		X	X	X	
School		X		X	X	
Counseling	X	X	X		X	
Multicultural Therapy	X		X		X	X
Empirically-Supported Treatments	X	X	X	X	X	X
Program Development / Evaluation	X			X	X	
Supervision	X		X	X	X	X
Integrated Health Care – Primary	X		X			X

Assessment

Attaining competency with psychological/behavioral health assessment is a core experience of the internship. Assessment tasks are emphasized to enhance knowledge and skill in the areas of diagnostic clarification, case conceptualization, and treatment planning. Interns are required to complete ten (10) assessment reports appropriate to his/her specific internship site. These reports may be in the form of comprehensive evaluations, diagnostic consultations, or primary care behavioral health assessments. Reports must include relevant biopsychosocial history to inform diagnosis, at least two empirically supported psychological/behavioral measures, a summary of findings, as well as treatment recommendations or adequate response to the referral question. If there are additional questions regarding what constitutes a psychological

assessment, contact the Regional Training Director for additional guidance prior to counting it. Assessments are supervised by licensed psychologists and should focus on the integration of history, test results, case conceptualization, and report writing skills. As competency is gained, the supervisor may allow the intern more autonomy in the administration and completion of assessments. The intern is expected to become more proficient and sophisticated in his/her ability to perform assessments as the internship progresses. If a site cannot provide the necessary number of assessment opportunities for a Psychology Intern, a secondary site may be assigned for a period of time during the internship year to provide the needed resources. Site Directors are to contact the President/CEO as soon as possible if they feel their site may not be able to meet this requirement.

Didactic Training

The primary focus of didactic training is to enhance interns' readiness to practice in either an integrative primary care setting or in a rural area. Psychology interns participate in a once-a-month two-day consortium-wide didactic training presented in a seminar/workshop format. The structure of this two-day training fosters the opportunity for more in-depth and comprehensive exploration of topics relevant to clinical practice and intern socialization. A reference list of literature pertinent to the monthly didactic training is provided to interns in advance of the training. Interns are expected to become familiar with the current literature and be able to enrich the training activity through participation and clarifying questions. Attendance at monthly didactic trainings also provides interns ongoing informal contact with each other so they can share experiences and provide support to one another.

Didactic Training Schedule

Didactic trainings are typically held the first Thursday and Friday of each month from 8:30 am to 5:00 pm on Thursday and 8:30 am to 3:00 pm on Friday. A minimum of 8 of the 15 hours of didactic training are spent in seminars and workshops with required learning objectives and a reading list covering relevant journal articles, etc. Each month didactics will also focus on either diversity topics of discussion and/or a formal diversity training. The remaining time is spent in Clinical Supervision Exercise, Critical Analysis, group supervision, and discussion of the intern's training experiences and needs. The seminars are conducted by practicing licensed mental health providers with extensive experience or expertise in the presented area. The trainings are generally conducted at the Burrell South Creek Theater (2885 W. Battlefield St., Springfield, MO) due to its central location. Interns will be notified in advance via email if the schedule or location has changed. Details regarding expenses related to travel and lodging for attendance at the didactic training are detailed in the *Intern Travel Policy*. The following is a list of dates for the training year:

2021-2022 Training Year		
Wednesday, July 28, 2021	Thursday, December 2, 2021	Friday, April 8, 2022
Thursday, July 29, 2021	Friday, December 3, 2021	Thursday, May 5, 2022
Friday, July 30, 2021	Thursday, January 6, 2022	Friday, May 6, 2022
Thursday, September 2, 2021	Friday, January 7, 2022	Thursday, June 2, 2022
Friday, September 3, 2021	Thursday, February 3, 2022	Friday, June 3, 2022
Thursday, October 7, 2021	Friday, February 4, 2022	Thursday, June 16, 2022
Friday, October 8, 2021	Thursday, March 3, 2022	Friday, June 17, 2022
Thursday, November 4, 2021	Friday, March 4, 2022	Thursday, July 14, 2022
Friday, November 5, 2021	Thursday, April 7, 2022	Friday, July 15, 2022

In the event of a bad weather cancellation, June 16th and 17th are reserved as didactic makeup days. If no didactic training dates are cancelled, then these dates will be free to use as the site needs.

Clinical Supervision Exercise

To foster their development as future supervisors, psychology interns spend between two and three hours each month in a Clinical Supervision Exercise. In this group, interns explore the professional role of supervisor and develop skills and attitudes appropriate to that function. This exercise utilizes supervision of either vignettes or actual cases provided by interns in a group setting. Interns may find it helpful or necessary to volunteer personal information during this process; however, it is not a required component to the exercise. Each month interns practice supervising in a mock setting as both supervisor and supervisee. Following the session, a discussion is facilitated on supervision style, level of effectiveness, areas for improvement, and theoretical underpinnings. The chief purpose of these exercises is to provide interns with experiential training in the supervision profession-wide competency and to encourage them to begin developing an effective supervision approach while receiving valuable and honest feedback in its practice. The facilitator will complete an observation form on each intern as a supervisor for both the intern and their site supervisor to use as additional feedback for continued intern growth and development. This process is supported during the didactic training year via a half-day presentation that focuses on current supervising theories and principles of supervision.

Intern Critical Analysis

As a part of didactic training, interns select an assessment case or a topic on which to conduct a 25-minute Critical Analysis and present to the intern group during the year. Interns are expected to investigate an assessment case or topic and compare their view to what the research says including a focus on assessments used in the case (as applicable) versus research best practices. Intern presentations will be evaluated on their ability to discuss research based on their topic and a set number of criteria.

Journal Review

Interns are provided with two hours in their weekly schedule for self-directed journal review to support knowledge of current, relevant research as well as the development of skills associated with lifelong learning. The intern should review topics related both to areas applicable to present training and to areas of professional interest such as dissertation-related topics. It is required that 10% of these journal articles are topics related to diversity. Interns are encouraged to post journal article summaries to the internship research listserv throughout the year. It will be a standing item in the weekly intern supervision to discuss what the intern learned from their journal readings during the previous week.



NPTC-Central Settings and Application

Site Membership and Descriptions

Internship training is carried out in a variety of affiliated member training sites. Currently, there are six member sites in the Central Region. Many of the sites within the consortium employ more than one doctoral-level licensed psychologist, ensuring opportunities for primary supervision by two on-site doctoral-level licensed psychologists. In instances where there is only one psychologist on-site, NPTC works with the training site to coordinate additional primary supervision for the intern.

Table 3 reflects the range of settings for NPTC member sites and Tables 4 and 5 reflect site statistics for patient populations and demographics served at each site. Brief descriptions of each site is provided on the pages which follow.

TABLE 3: Characteristics of Member Sites

	Community Mental Health	Private Practice	Medical Center	Other
Burrell Behavioral Health	X		X	Rotation in Integrated Health Care
Clark Community Mental Health	X			
Compass Health	X			
Family Psychological Center		X		School-based assessment
Royal Oaks Hospital			X	Psychiatric Inpatient
Truman Medical Center			X	Psychiatric Inpatient

TABLE 4: Site Statistics

	Burrell	Clark Center	Compass Health	Family Psych. Center	Royal Oaks Hospital	Truman Medical Centers
Patients Served (annually)	27,760	unknown	175,000	510	1,238	2,288
Counties Served	25	3	45	6	multi-state	5
Elderly	10.97%	2.6%	5%	10%	10%	5%
Adult	39.94%	71%	45%	15%	25%	95%
Adolescent	8.83%	19%	20%	20%	50%	0%
Child	12.97%	7%	30%	50%	25%	0%

Note: The following table represents select patient populations at each site. See the website for more detailed information about all of the patient populations at each site.

TABLE 5: Patient Populations

	Burrell	Clark Center	Compass Health	Family Psych. Center	Royal Oaks Hospital	Truman Medical Centers
Inpatients	X		X		X	X
Outpatients	X	X	X	X		
LGBTQI+			X	X	X	X
Ethnic Minorities	X		X	X		X
Spanish-Speaking	X		X	X	X	X
Deaf/hearing-impaired	X				X	X
Students			X	X	X	
Rural	X		X	X	X	X
Urban	X		X	X	X	X
Low Income	X	X	X	X	X	X
Homeless	X		X	X	X	X



Burrell Behavioral Health Center

Positions: 6

Match Number: 192511

Training Director: Brittany Pratt, Psy.D.

Internship website: <http://psychologyinterns.org/central-current-sites/burrell/>

Burrell Behavioral Health is a private, not-for-profit Community Mental Health Center with internship positions available in either our Central Region (Columbia, MO) or Southwest Region (Springfield, MO). Burrell has established community partnerships, resulting in unique opportunities for interns who are matched in these rotations. These partnerships further facilitate Burrell's mission of meeting behavioral health needs when and where they occur, and before they become more serious. Burrell's goal is to develop well trained psychologists with skills in community behavioral healthcare, through appropriate and meaningful rotations and supportive/encouraging supervision.

Burrell has locations in 25 counties in Missouri and Arkansas, and treats approximately 45,000 patients each year with goals of significant workforce development and improved patient access. Patient populations, while racially homogeneous, offer a unique training experience. While Springfield and Columbia are the third and fourth largest cities in Missouri, respectively, training experiences often involve a rural mental health feel and encompass what it means to have diversity, and to respect and value diversity, within these areas. Areas also continue to be relatively heavily impacted by poverty, as evidenced by high a Medicaid population and high free/reduced lunch proportions in public schools. We also see a growing Hispanic/Latino population and a growing older adult population.

Burrell provides a wide range of training opportunities due to its comprehensive continuum of care. Opportunities include but are not limited to general outpatient services across the lifespan, autism spectrum services, adolescent substance-use disorder, child/youth community

psychiatric rehabilitation centers (CPRC), adult CPRC, senior adult CPRC, and residential treatment for youth. Burrell Interns will also gain a variety of advanced assessment experience through rotations with MAPS at Burrell, which operates under a private practice model, providing extensive assessments ranging from neuropsychological assessments, forensic assessments, and comprehensive assessment batteries across the lifespan. Interns in these positions will have major and minor rotation options they will choose from during their site orientation, based on experience and interest areas.

Burrell @ CoxHealth

Positions: 1

Match Number: 192512

Training Director: Brittany Pratt, Psy.D.

Internship website: <http://psychologyinterns.org/central-current-sites/burrell/cox>

In addition to the general Burrell intern positions, there are also rotation opportunities within Medical Settings. Burrell Behavioral Health has partnered with CoxHealth in Springfield, Missouri to offer a unique internship experience. CoxHealth is a large, not-for-profit health system with internship positions located in Springfield, Missouri. Internship positions through Burrell @ CoxHealth will have a range of opportunities for training including inpatient psychiatric, acute medical, telehealth, and integrated behavioral healthcare.

More specifically, interns in the inpatient psychiatric units will spend time on the adult units as well as the child-adolescent unit. They will be part of a treatment team that includes psychiatrists, psychologists, nurses, various therapists and technicians. In both areas, interns can expect to be involved in individual, group, and/or family therapies. Training in the acute medical or rehab hospitals focuses on health-oriented psychology and interns will work with patients experiencing a variety of health conditions. These may be related to neurology, cardiology, oncology, obstetrics/gynecology, pediatrics, as well as emergency medicine and trauma. Interns will get the chance to work as part of a treatment team and collaborate with professionals in many other fields. Interns who seek training in integrated behavioral healthcare will be able to work with patients on a variety of factors including, but not limited to, lifestyle changes, management of chronic disease states, psychosocial risk factors, disease-related distress, and behavioral interventions related to familial or academic difficulties. Screening assessments, consistent with integrated behavioral healthcare practice, will also be a routine part of the training program. Interns will have opportunities to practice integrated healthcare in primary care, pediatric, and specialty care settings. Broadly, opportunities may also be available for interns to engage in tele-behavioral health for our rural, underserved clinics. Currently, all internship-applicable clinics are located in Springfield, Missouri. In addition, internship training programs are customizable (as time and coverage allows) based on an intern's training needs and wants.



Clark Community Mental Health Center

Positions: 2

Match Number: 192513

Training Director: Richard Brewer, Psy.D.

Internship website: <http://psychologyinterns.org/central-current-sites/clark-center/>

Clark Community Mental Health Center is the Administrative Agent for the Department of Mental Health, providing comprehensive psychiatric, substance abuse treatment and prevention services to residents in a three county area. The facility is home to outpatient mental health counselors, and alcohol/drug abuse counselors and psychiatrists. Additionally, Clark Center supports a tele-health program offered through the University of Missouri, Columbia.

The mission of the Clark Community Mental Health Center is to be a crisis assessment and information resource for area residents in need of assistance with mental illness, substance abuse, mental retardation, and developmental disabilities. In addition to the primary psychiatric and substance abuse services offered, Clark Center provides crisis support through telephone and mobile assistance as well as education and outreach within the schools and communities it serves.



Our Mission: Inspire Hope. Promote Wellness.

Compass Health
Network
compasshealthnetwork.org

Compass Health Network

Training Director: Melissa Webb, Psy.D.

Internship Website: <http://psychologyinterns.org/central-current-sites/compass-health/>

Compass Health Network is a community mental health system, which provides comprehensive psychiatric, substance abuse treatment and prevention services. With 42 satellite clinics throughout Missouri, Compass Health provides opportunities for Psychology Interns to work with a diverse client base.

The mission of Compass Health is to enhance wellness in the lives of individuals and communities by instilling hope, building partnerships, and supporting recovery. Services provided range from brief individual, group or family counseling dealing with issues such as depression and anxiety to long-term care and support for adults with serious mental illness and children with serious emotional disturbances.

Interns placed at Compass Health will typically provide services at two satellite clinics within driving distance of each other. As all NPTC-Central sites, Compass Health reimburses interns for travel beyond 20 miles. Interns apply to the office(s) at which they would like to be placed. Primary sites currently listed for the 2021-2022 training year are provided below with some basic training opportunities available. Additional details for each are available on the website.

Compass Health – Columbia

Positions: 2

Match Number: 192514

Core outpatient treatment services include working in a Federally Qualified Health Center (FQHC) with a team of LPC's, LCSW's, and psychologists providing individual, couples, group, and family therapy with children, adolescents, and adults. Services at this location will also include school-based behavioral health (in the local schools), crisis and triage, psychological assessment and testing, and psychiatric/medication management. Interns may also facilitate intensive outpatient group and individual treatment programs for adolescents with substance use disorder as well as individual and group treatment for adults. Interns may also provide community-based behavioral services and support with integrated health specialists working with adults in the community.



Compass Health – Odessa

Positions: 2

Match Number: 192515

Core outpatient treatment services include with a team of LPC's, LCSW's, and psychologists providing individual, couples, group, and family therapy with children, adolescents, and adults. Services at this location will also include crisis and triage, psychological assessment and testing. Interns may also facilitate intensive outpatient group and individual treatment programs for adults and adolescents with substance use disorders. Interns may also provide community-based behavioral services and support in the community.



Compass Health – Rolla

Positions: 2

Match Number: 192516

Core outpatient treatment services include working in a Federally Qualified Health Center (FQHC) with a team of LPC's and psychologists providing individual, couples, group, and family therapy with children, adolescents, and adults. Services at this location will also include school-based behavioral health (in the local schools), crisis and triage, psychological assessment and testing, and psychiatric/medication management. Interns may also facilitate inpatient group and individual treatment programs for adolescents with substance use disorder. Interns may also provide community based behavioral services and support with integrated health specialists working with adults and children in the community. There is also a housing program for developmentally disabled adults.



Compass Health – Wentzville

Positions: 2

Match Number: 192517

Core outpatient treatment services include working in a Federally Qualified Health Center (FQHC) with a team of LPC's, LCSW's, and psychologists providing individual, couples, group, and family therapy with children, adolescents, and adults. Services at this location also include crisis and triage, Dialectical Behavior Therapy, psychological assessment and testing, and psychiatric/medication management. Interns may also facilitate individual and group outpatient treatment for adults. Interns may also coordinate with integrated health specialists working with clients in the community.



**Compass Health/Royal Oaks Dual Tracks
Windsor, MO / Butler, MO or Warrensburg, MO
Positions: 3**

Match Numbers: 192520 (Butler)
192521 (Warrensburg)



Half of their time interns will be providing services in either the Compass Health outpatient office in Butler, MO (top photo) or Warrensburg, MO (bottom photo). Core outpatient treatment services in both locations include working with a team of LPC's, social workers, and psychologists providing individual, couples, group, and family therapy with children, adolescents, and adults. Services at these locations will also include crisis and triage, psychological assessment, and psychiatric/medication management. Interns may also provide community based behavioral



services and support with integrated health specialists working with adults and children in the community. Both offices also have opportunities for group and individual substance use disorder treatment programs for adults and adolescents.

The other half of their time interns will spend at the inpatient unit at Royal Oaks Hospital. Core inpatient treatment services include working with a team of LPC's, social workers, and psychologists providing individual, couples, group, and family therapy with children, adolescents, and adults. Interns will have a rotating placement in child, adolescent, and adult inpatient units providing psychological assessment, therapy, group coverage, and psychiatric/medication management. More information on the Royal Oaks Hospital experience is detailed below.





Family Psychological Center, P.A.

Positions: 1

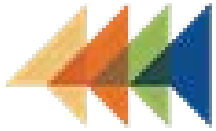
Match Number: 192518

Training Director: Charles Nichols, Psy.D.

Internship Website: <http://psychologyinterns.org/central-current-sites/family-psychological-center-pa/>

Family Psychological Center, P.A. is a private practice located in Harrison, Arkansas which provides outpatient psychological services in a rural context. Serving a regional population of 60,000 in north-central Arkansas, the Family Psychological Center receives referrals primarily from physicians, public schools, judges, and the Division of Human Services.

The mission of Family Psychological Center is to provide quality, intensive training in the practice of Clinical Psychology in a rural psychology setting. Psychology Interns benefit from exposure to multiple supervisors who have varying theoretical orientations and practice specialties. Training opportunities are varied and include assessment of a range of clientele and presenting problems with a diverse mix of assessment instruments and approaches. Psychology Interns have open access throughout the week to their primary supervisor in addition to scheduled supervisory sessions.



Royal Oaks Hospital
Compass Health Network

Royal Oaks Hospital

Royal Oaks: 4

Compass Health/Royal Oaks Dual Tracks: 3

Match Numbers: 192519 (Traditional); 192520 (Butler Dual); 192521 (Warrensburg Dual)

Training Director: Tenea Lowman, Psy.D.

Internship Website: <http://psychologyinterns.org/central-current-sites/royal-oaks-hospital/>

Royal Oaks Hospital is a 54-bed acute care inpatient facility located in Windsor, Missouri. Serving a rural community of approximately 3,000 people, Royal Oaks provides outpatient psychiatric services and acute inpatient care.

The mission of Royal Oaks Hospital is to enhance wellness in the lives of individuals and communities by instilling hope, building partnerships, and supporting recovery. Dedicated to research and program development in mental health, Royal Oaks provides an internship experience with a special focus on rural health issues. Training at Royal Oaks Hospital is guided by principles of integrity and excellence, open communication, courage, hope, self-direction, healthy partnerships, a culture of dignity, and a respect for diversity.

Interns will have hands-on experiences with support from interdisciplinary team members. Exposure to direct patient care is experienced, as is administrative and personal professional development.

Individuals from all SES, ethnic, cultural and geographic locations received care at Royal Oaks. Interns will provide their primary therapy (individual, group and family) as well for psychological testing.

Interns in the dual track experience will split their time between Royal Oaks Hospital and either the Compass Health outpatient office in Warrensburg, MO or Butler, MO. More details about this experience is provided above.

All primary and secondary supervisors completed their internship at Royal Oaks and residency within Compass Health and have remained on staff. A combined, 40 years of experience at Royal Oaks is available for interns, from supervisors that were reared professionally within the organization.





Truman Medical Centers

Positions: 1

Match Number: 192522

Training Director: Shawn McDaniel, Psy.D.

Truman Medical Center is an inpatient psychiatric hospital affiliated with the larger network of Truman hospitals and outpatient clinics. The inpatient facility is comprised of two 25-bed acute units. These units serve a highly diverse patient population in the Kansas City metropolitan area, particularly in the downtown area. Interns will provide services on each of the acute units, including individual therapy, group therapy, and psychological assessment. Interns will also participate in regularly scheduled treatment team meetings comprised of multiple professionals of various disciplines.

There are also additional training opportunities when available, such as witnessing civil commitment hearings, providing behavioral consultations at the main hospital, and possible outpatient testing. Interns will also gain supervision practice with practicum students and master's level interns when possible. The goal of the acute rotations is to ensure that interns achieve an intermediate to advanced level of proficiency in providing professional assessment, intervention, and consultation services that are firmly grounded in psychological science. Individual supervision will be provided by two staff psychologists who are present full time on the inpatient units. Each supervisor will generally provide intensive supervision for either therapy or assessment. Interns will also participate in group supervision provided by additional licensed psychologists within the larger Truman organization. Each week also provides a wide range of educational opportunities, including grand rounds with the department of psychiatry, case conferences, journal club, and weekly assessment seminar.

Psychology Intern Schedule and Time Allocation

The Psychology Intern contract is for a 12-month duration beginning the 28th of July, 2021, and extending through the 27th of July, 2022 unless otherwise specified. Interns will receive a salary of \$30,000 over the year. Consistent with APA CoA guidelines, doctoral students shall be represented as “psychology interns” and complete a total of 2,000 hours over the course of the training year. Intern leave time is included in this total. A “normal” schedule is defined as the intern working Monday—Friday 8–5. NPTC acknowledges that from time-to-time interns may be required to deviate from this “normal” schedule. Site schedules are a general guideline and interns may be required to make themselves available at other times as needed. It is expected that the Member, the intern and the President/CEO will use reasonable judgment in managing such situations. However, any recurrent or regularly scheduled deviation from this schedule should be clearly stated in the individual site’s manual addendum and provided to the intern prior to the start of the training year. Each intern’s schedule may vary according to her/his special interests, as spelled out in their Individual Learning and Training Plan and with consideration to needs of the training site.

The remaining time in the intern’s schedule will be accounted for as designated in the Individual Learning and Training Plan with consideration of the intern’s interests and chosen elective activities. All interns will be required to participate in activities that are designated as APPIC, APA, and state licensure minimum requirements for Psychology Internship Training.

Benefits

Psychology Interns assigned to NPTC member sites are considered Psychology Interns of NPTC but employees of the Member site. Members, in coordination with NPTC, agree to provide the following benefits to each of the interns:

- Annual salary as designated by site.
- Optional enrollment for interns and families in member site’s employee benefit plans. This benefit can require financial participation of the intern.
- Provide primary commercial general liability, professional liability, and worker’s compensation coverage for intern(s).
- At least 14 days (112 hours) of non-accrual based PTO (including vacation and sick).
- At least 3 days (24 hours) of professional development time either tracked as CME/Training hours or counted as hours worked, but available for approved professional development activities.
- At least 7 paid holidays.
- Adherence to FLSA laws regarding exempt/non-exempt status and overtime pay for interns (if applicable).
- Mileage reimbursement as defined in the individual site’s reimbursement policy

For more specific details regarding the benefits provided at your site, please see the Internship Admissions, Support, and Initial Placement Data section and their page on the website.

Eligibility, Application, and Selection Procedures

Eligibility

Applications for internship are accepted from persons who have met the following requirements:

- Comprehensive Examination successfully completed
- Master's degree completed
- Dissertation or Doctoral Project proposal approved by match ranking deadline
- Completion of a minimum of 1000 total practicum hours, of which...
 - 250 should be Intervention and Assessment hours
 - 100 should be Supervision hours
- Completion of all required coursework for doctoral degree (other than dissertation/doctoral project)
- Approval to participate in the APPIC National Match

Applicants who possess a Master's degree and are willing to obtain state licensure may be given preference in the applicant selection process.

Most NPTC sites require background checks and/or drug screens prior to beginning the internship. Eligibility to begin internship, even after match, is contingent upon the intern passing these tests. If a matched intern fails to pass a background check or drug screen, NPTC reserves the right to withdraw the invitation to match with the intern. Details regarding what is required at each site is provided on the website.

As a part of the partial affiliations between NPTC and the Chicago School of Professional Psychology and Pacific University School of Professional Psychology, students from the Chicago School and Pacific University are given preference in the selection process. However, interns from programs will still be considered and are encouraged to apply. Please see the FAQ section on Partial Affiliation for more information about this agreement.

Internship Application Process

Application Deadline: November 8, 2020

The National Psychology Training Consortium requires that the AAPI Online application service be used by all applicants in order to be considered for our internship training program. Applicants must select the NPTC Region(s) in which they are interested. Each region will be listed separately in the AAPI portal under the name "National Psychology Training Consortium – [Region Name]." Each **NPTC region** is considered a separate application. However, once a region or multiple regions are selected, individuals may apply to as many training sites within the selected regions as they wish for no additional application fees. Applicants should utilize the program code numbers provided on the following page or on the *APPIC Match Information* sections of the other regional brochures to select their preferred sites within each region. Applicants should also indicate which sites she/he is applying to in the AAPI cover letter.

The following information is required for all NPTC applications:

- Cover letter specifying the sites being applied to and why the intern is a good fit for each
- APPIC AAPI as designated on the online application
- Three letters of reference
- One psychological evaluation report writing sample submitted as supplemental material

Eligible applications are reviewed and ranked by a combination of NPTC staff and individual site directors. A select group of applicants are invited for interview. Notification of invitation to interview is made by December 1st. Due to COVID-19 safety precautions, APPIC has strongly recommended that there be no in-person interviews during this match season. For this reason, NPTC and partner sites have decided to cancel all in-person interview days. However, additional information regarding the remote interview process will be provided to applicants closer to December 1st.

Following interviews, individual sites rank the interviewed candidates for submission in the APPIC match service. All final rankings are submitted by the Director of Operations, and application and selection procedures follow the APPIC guidelines. Internship applicants will be informed of their selection through the APPIC notification process contracted through the National Match Service.

This internship site agrees to abide by the APPIC policy that no person at this training facility will solicit, accept, or use any ranking-related information from any psychology intern applicant.

APPIC Match Information

NPTC-Central participates in the APPIC internship matching program. Applicants must use the correct 6-digit program code (listed below) to identify each program on his/her Rank Order List. A match can only occur if the applicant and site use the same program Code Number when submitting the Rank Order Lists. Applicants can also obtain the Code Number for each program from the Listing of Programs participating in the Match, which is available on the APPIC Matching Program web site (www.appi.org) or on the NPTC Website (www.psychologyinterns.org). Applicants may use these web pages to view up-to-date information on available sites and experiences through NPTC-Central.

Program Code Number	Program Description	Available Slots
192511	Burrell Behavioral Health	6
192512	Burrell @ CoxHealth	1
192513	Clark Community Mental Health	2
192514	Compass Health – Columbia	2
192515	Compass Health – Odessa	2
192516	Compass Health – Rolla	2
192517	Compass Health – Wentzville	2
192518	Family Psychological Center	1
192519	Royal Oaks Hospital	4
192520	Royal Oaks/Compass Health – Dual Track – Butler	2
192521	Royal Oaks/Compass Health – Dual Track Warrensburg	2
192522	Truman Medical Centers	1



Internship Admissions, Support, and Initial Placement Data

Date Program tables were updated: August 2020

*Please note that this information is also available on our website

Internship Program Admissions

Briefly describe in narrative form important information to assist potential applicants in assessing their likely fit with your program. This description must be consistent with the program's policies on intern selection and practicum and academic preparation requirements:

As a part of the partial affiliations between NPTC and the Chicago School of Professional Psychology and Pacific University School of Professional Psychology, students from the Chicago School and Pacific University are given preference in the selection process. However, interns from programs will still be considered and are encouraged to apply. Please see the FAQ section on Partial Affiliation for more information about this agreement.

Does the program require that applicants have received a minimum number of hours of the following at time of application? If Yes, indicate how many:

Total Direct Contact Intervention Hours	N	Y	Amount: NPTC requires a combined total of 250 hours.
Total Direct Contact Assessment Hours	N	Y	Amount: NPTC requires a combined total of 250 hours.

Describe any other required minimum criteria used to screen applicants:

- Comprehensive Examinations successfully completed
- Master's degree completed
- Dissertation proposal approved by start of internship
- Completion of a minimum of 1,000 total practicum hours, of which...
 - 250 should be Intervention and Assessment hours
 - 100 should be Supervision hours
- Must have completed three years of graduate training
- Enrollment in an APA- or CPA-accredited clinical (preferred), counseling, or school psychology doctoral program; OR a non-accredited school that has had or has been approved for an APA site visit.

Note: Sites conduct background checks on incoming interns and not successfully passing these screenings/background checks may cause these sites to break a match with an incoming intern. The specific requirements for these background checks and what it means to successfully pass or fail these tests are detailed on each site page under Intern Selection Process.

Financial and Other Benefit Support for Upcoming Training Year*

<i>Annual Stipend/Salary for Full-Time Interns</i>	\$30,000
<i>Annual Stipend/Salary for Half-Time Interns</i>	N/A
<hr/>	
<i>Program provides access to medical insurance for interns?</i>	Yes
<i>If access to medical insurance is provided:</i>	
<i>Trainee contribution to cost required?</i>	Yes
<i>Coverage of family member(s) available?</i>	Yes
<i>Coverage of legally married partner available?</i>	Yes
<i>Coverage of domestic partner available?</i>	Yes
<i>Hours of Annual Paid Personal Time Off (PTO and/or Vacation)</i>	112 hours (~14 days) of PTO for use as vacation and sick.
<i>Hours of Annual Paid Sick Leave</i>	Sick leave is included in the 112 hours of PTO provided.
<i>In the event of medical conditions and/or family needs that require extended leave, does the program allow reasonable unpaid leave to interns/residents in excess of personal time off and sick leave?</i>	Yes. Please note that for every day of unpaid leave taken, will be an automatic extension of internship by the same amount of time.
<i>Other Benefits (please describe):</i>	
<ul style="list-style-type: none"> • Interns are provided with three (3) days of professional development leave • Interns are provided with at least seven (7) holidays, with many sites observing more • Professional liability insurance for anyone not already covered by their school • Access to Group Vision (Burrell, Compass Health, Royal Oaks, Truman Medical) • Access to Group Dental (Burrell, Compass Health, Royal Oaks, Truman Medical) • Access to life insurance (Burrell, Compass Health, Royal Oaks, Truman Medical) • Short-Term Disability (Burrell, Compass Health, Royal Oaks, Truman Medical) • Long-Term Disability (Burrell, Family Psychological Center, Truman Medical) • Access to Group Retirement with employer match: Burrell (no match), Compass Health (6% match), Royal Oaks (6% match), Truman Medical (match .50 per \$1 up to 8%) • Cafeteria plans for medical and/or dependent care (Burrell, Compass Health, Family Psychological Center, Royal Oaks, Truman Medical) • Employee Assistance Program (free short-term counseling for intern/family; Burrell, Compass Health, Royal Oaks, Truman Medical) • Licensure Assistance Program (Compass Health, Royal Oaks) • 529 college savings (Burrell, Truman Medical) • Additional discounts and/or wellness incentives (Burrell, Truman Medical) 	

*Note. Programs are not required by the Commission on Accreditation to provide all benefits listed in this table.

Initial Post-Internship Positions

(Provide an Aggregated Tally for the Preceding 3 Cohorts)

	2017-2018 through 2019-2020	
Total # of interns who were in the 3 cohorts:		59
Total # of interns who did not seek employment because they returned to their doctoral program/are completing doctoral degree:		0
	PD	EP
Community mental health center	14	6
Federally qualified health center		
Independent primary care facility/clinic		
University counseling center	1	
Veterans Affairs medical center	2	
Military health center		
Academic health center		
Other medical center or hospital	7	5
Psychiatric hospital	4	
Academic university/department		
Community college or other teaching setting		
Independent research institution		
Correctional facility		
School district/system		
Independent practice setting	7	3
Not currently employed		
Changed to another field		
Other	2	1
Unknown	7	

Note: "PD" = Post-doctoral residency position; "EP" = Employed Position.



References

- American Psychological Association. (1992). Ethical Principles of Psychologists and Code of Conduct. www.apa.org/ethics/code.
- American Psychological Association. (2012). Rural health. Retrieved from <http://www.apa.org/practice/programs/rural/index.aspx>
- Association of Psychology Predoctoral and Internship Centers. www.appic.org.
- Committee on Rural Health Mission. (2012). Retrieved February 28, 2012, from <http://www.apa.org/practice/programs/rural/committee/mission.aspx>
- Lorenz, F. O., Wickrama, K.A., & Yeh, H. (2004). Rural mental health: Comparing difference and modeling change. In N. Glasgow, L. W. Morton, & N. E. Johnson (Eds.), *Critical issues in rural health* (75-88). Ames, Iowa: Blackwell Publishing Professional
- Missouri Psychological Association. Rules of Code and Conduct. www.mosych.org/legal/chapter5.htm. Title 4 -Department of Economic Development, Division 235 —State Committee of Psychologists, Chapter 5 – Rules of Conduct. 4CSR 235-5.030 – Ethical Rules of Conduct.
- National Council of Schools and Programs of Professional Psychology. www.am.org/ncspp.
- Robinson, P. J., & Reiter, J. T. (2015). *Behavioral consultation and primary care: A guide to integrating services* (2nd ed.). New York: Springer.
- Student Competence Task Force of the Council of Chairs of Training Councils. (2004). Comprehensive evaluation of student-trainee competence in professional psychology programs. Retrieved June 4th, 2012, from <http://www.psychtrainingcouncils.org/pubs/NCSP-20CCTC20model20Student20Competency.pdf>
- Trierweiler, S. J. & Stricker, G. (1992). Research and evaluation competency: Training the local clinical scientist. *The Core Curriculum in Professional Psychology*. Washington, DC: APA.



NPTC

NATIONAL PSYCHOLOGY TRAINING CONSORTIUM
Training Tomorrow's Psychologists

Appendix A: APA Accreditation



APA Accreditation

National Psychology Training Consortium – Central Region has been accredited by the Commission on Accreditation of the American Psychological Association since fall of 2013 (originally under the name Heart of America Psychology Training Consortium). This program is accredited for seven years. Our next site visit will be scheduled for the Spring/Summer cycle of 2020. If you have any questions regarding the program or any of the member sites, please contact President/CEO, Adam Andreassen, Psy.D. by phone (417-812-6495) or email (aandreassen@psychologyinterns.org).

Questions related to the program's accredited status should be directed to the Commission on Accreditation:

[Office of Program Consultation and Accreditation](#)

American Psychological Association

750 1st Street, NE, Washington, DC 20002

Phone: (202) 336-5979

Email: apaaccred@apa.org

Web: www.apa.org/ed/accreditation

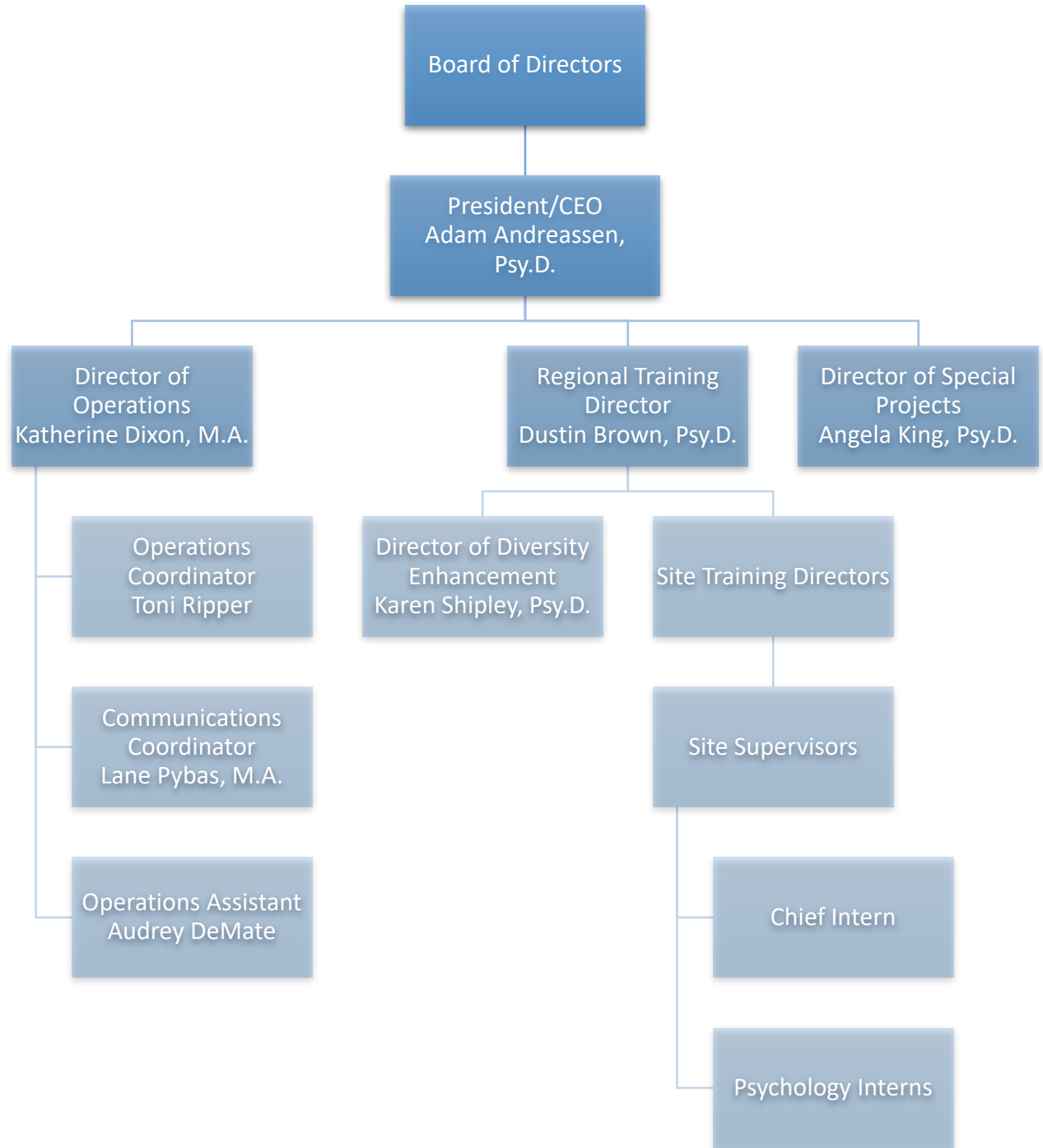


NPTC

NATIONAL PSYCHOLOGY TRAINING CONSORTIUM
Training Tomorrow's Psychologists

Appendix B: Organizational Information

**National Psychology Training Consortium
Organization Chart**





NPTC

NATIONAL PSYCHOLOGY TRAINING CONSORTIUM
Training Tomorrow's Psychologists

Appendix C: Research Reviews

Rural Psychology

“In almost all rural and frontier areas, health care practitioners, services and infrastructure are in short supply. The population is small and is disproportionately older. These areas have low household incomes, relatively high unemployment rates and high poverty rates. Unfortunately, they also have a high proportion of the population that lacks health insurance or has inadequate coverage. Providing behavioral health care services to rural residents is further complicated by the presence of stigma” (American Psychological Association, 2012).

These words are taken from the American Psychological Association’s (APA) webpage dedicated to rural health awareness and initiative. They represent a longstanding commitment on behalf of the APA to promote increased awareness and resource allocation for rural residents and frontier populations. A significant barrier repeatedly encountered by organizations such as the APA Committee on Rural Health and The National Association for Rural Mental Health (NARMH) is the limited amount of specialty mental healthcare clinicians interested in rural practice.

Results of the shortage of specialty mental healthcare clinicians in rural areas have been changes in public health policy and the reallocation of financial incentives to attract practitioners, such as psychologists, to rural America. The recent expansion of the scope of the National Health Service Corps (NHSC) loan forgiveness programs has allowed further attraction of psychologists to these underserved areas. Other results from the shortage of psychologists in rural America have been the development and expansion of various training institutions, programs, and continuing education venues such as the National Psychology Training Consortium (NPTC). In the past decade NPTC has changed the specialty mental healthcare landscape in the rural Ozark Plateau region of Missouri and Arkansas. Since its inception, over one-hundred doctoral psychology interns have fulfilled their final doctoral requirements while participating in its various training programs. Many of those interns have continued their clinical practice in rural Missouri or Arkansas after attaining full licensure.

The above listed initiatives and incentives are important as years of research have shown rural life to be less idyllic and tranquil than often thought. The facts are that rural Americans suffer from similar rates of psychological disorders as their urban counterparts. Additionally, illicit drug use, often methamphetamine, and male suicide rates have been found to be disproportionally higher in rural Americans compared to urban Americans (Lorenz, Wickrama, & Yeh, 2004). According to the same authors, reasons for these higher rates of psychopathology have been attributed to the stresses of isolation and the deterioration of culture/community. Furthermore, the lack of licensed specialty mental healthcare providers, such as psychologists, contributes to these trends of mental illness in rural America. For these reasons, NPTC continues to recommit itself to address the psychological needs of the rural underserved.

For more information about Rural Mental Health, you can visit the follow web sites:

<http://www.apa.org/practice/programs/rural/index.aspx>

<https://www.hrsa.gov/rural-health/index.html>

<https://www.hrsa.gov/advisory-committees/rural-health/index.html>

<https://www.ruralcenter.org/>

<https://www.wiche.edu/mentalhealth>

<http://www.apa.org/practice/programs/rural/resources.aspx>

Primary Care Behavioral Health

A growing body of literature calls for the inclusion of broad-based mental health services in America's healthcare system. Furthermore, there is recognition of the need and utility of an "integrative" approach to mental health and behavioral health into our "healthcare" system.

The primary care setting has been viewed as the preferred setting for the delivery of behavioral health care services. There are three principle goals of integrative care: 1) to produce healthier patients, 2) to create more efficient resource expenditures, and 3) to remove barriers to access.

One of the primary goals of the NPTC-Cascades is to provide Psychology Interns with the skills to practice in and even manage integrative primary care settings. All designated sites within the Cascades Region implement the Primary Care Behavioral Health (PCBH) model and offer this intense and focused training.

The PCBH care training model provides training to work in a medical office, hospital, ER, and medical care facility and interact with a multidisciplinary team while focusing on the behavioral needs of the patient. This training model requires a strong background in at least one of the following areas: primary care behavioral health, integrative primary health care, medical psychology, health psychology, rehabilitation psychology or pain management. Psychology Interns interact in a triage fashion with the medical staff providing valuable feedback and intervention on a behavioral level for the patient's medical condition.

Information regarding the PCBH model can be found in the links below.

- <http://www.behavioralconsultationandprimarycare.com/>
- <http://www.cfha.net/?page=PCBHSIG>
- <http://www.mtnviewconsulting.com/>
- https://www.youtube.com/playlist?list=PLvLh_YdubBs6EWenUaD1PP3EF4k8-P0mW
- https://www.youtube.com/playlist?list=PLvLh_YdubBs7eH3GA0GFuCMag1Ey-d3_O
- https://www.youtube.com/playlist?list=PLvLh_YdubBs5P-dw9IrSH7-TwTqM8fkqo